



Oracle Series IPM01 - MODBUS TCP/RTU Bridge

- MODBUS TCP to MODBUS RTU translation.
- Supports Master device on either TCP or serial ports.
- DHCP & NetBIOS Device name resolution.
- View PSU information in a web browser *1
- Embedded Web page configuration with upgradable firmware..
- DIN-Rail Mountable enclosure.
- RS232 or RS485 versions available.
- Supports multiple RTU clients on RS485.



General Features.

The IPM-01 has been designed to allow Vxl Power supplies that feature the MODBUS RTU communication protocol (via RS485 or RS232), to communicate with MODBUS TCP Devices. The IPM-01 creates a communication bridge between MODBUS TCP and Modbus RTU devices, appearing transparent to both master and slave devices.

The IPM-01 will give any Vxl MODBUS RTU compatible device network visibility, allowing a serially connected device to be controlled or monitored over the internet!

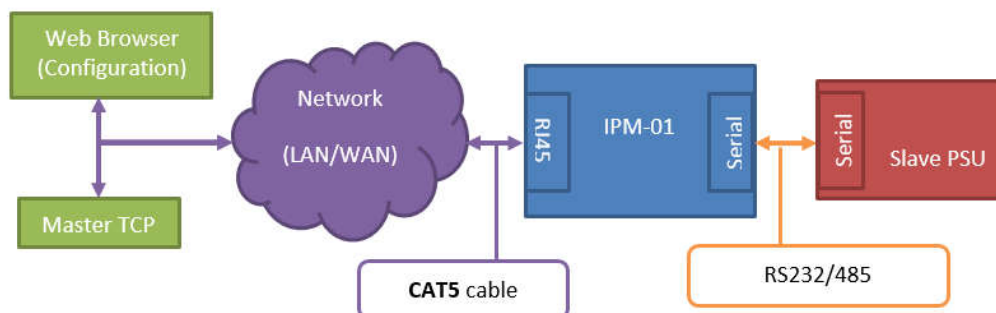
The IPM-01 features an embedded web server, allowing the user to view PSU modbus parameters *2 and to configure the device via a web browser.

The device is housed in an industrial din rail enclosure and has an operating temperature range of -20 to +50C and a 9 – 32V input range.

Supporting baud rates up to 57600 over 3 wire Rs232 or 485, with indicators for serial TX & RX activity. The IPM-01 is compatible with all Vxl Oracle products with a serial Modbus interface.

As with all Vxl Power's products, custom specifications can be engineered upon request.

Typical Connection



1 - Compatible with any browser supporting Javascript.
2 - Consult manufacturer for specific model required.

Vxl Power Limited, Westminster Trading Estate,
Station Road, North Hykeham, Lincoln, LN6-3QY, England.

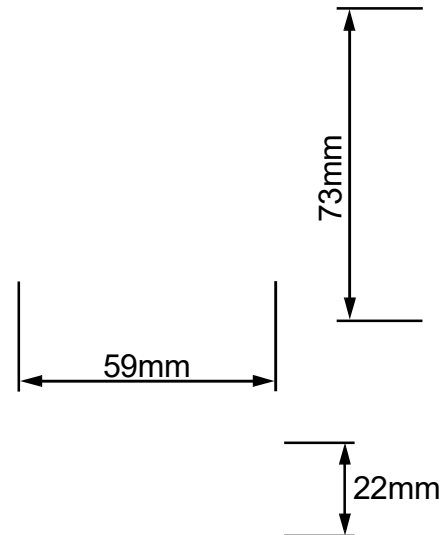
T: +44 (0)1522 500511 E: sales@vxipower.com

www.vxipower.com

Specification.

Input Voltage Range:	9-32V DC															
Connections	<p>Power 2x Screw Terminal +VIN, 0V (Max Conductor Size 4mm²)</p> <p>Serial 3x Screw Terminal RS232 TX, RX, 0V RS485 A(+), B(-), 0V (Max Conductor Size - 4mm²)</p> <p>Ethernet RJ45 socket</p>															
User Indicators	<p>1x Serial Transmit indicator LED – Green</p> <p>1x Serial Receive indicator LED – Red</p> <p>1x Reset/Restore Button</p>															
Operating Temperature: Storage Temperature: Storage Humidity:	<p>-20°C - +50°C *</p> <p>-20°C - +85°C</p> <p>5% - 95%, non-condensing</p> <p>* -40°C version available on request</p>															
Dimensions:	35mm Top Hat Din-rail mountable enclosure 59x22x73mm															
Power Requirement:	<p>720mW (Typical Active)</p> <p>Power Consumption Information</p> <table border="1"> <thead> <tr> <th>I/P Voltage</th> <th>Current mA</th> <th>Power (mW)</th> </tr> </thead> <tbody> <tr> <td>8</td> <td>90</td> <td>720</td> </tr> <tr> <td>12</td> <td>60</td> <td>720</td> </tr> <tr> <td>24</td> <td>30</td> <td>720</td> </tr> <tr> <td>32</td> <td>22</td> <td>704</td> </tr> </tbody> </table>	I/P Voltage	Current mA	Power (mW)	8	90	720	12	60	720	24	30	720	32	22	704
I/P Voltage	Current mA	Power (mW)														
8	90	720														
12	60	720														
24	30	720														
32	22	704														
Protocol:	MODBUS TCP MODBUS RTU															
Serial Port Details:	Parity: Odd, Even or disabled. (when disabled, extra stop bit)															
Supported Baud Rates: Read/write request size:	9600, 19200, 38400, 57600 Supports Reads/Writes of up to 150 registers															
Ethernet Details	RJ45, 10Base-T, 802.3 compliant															
Other Features:	<p>DIN-Rail Mountable.</p> <p>DHCP (Client only) – Enabled by default.</p> <p>NetBIOS Device name resolution</p> <p>HTTP Server with Configuration Interface.</p> <p>Supports Multiple RTU clients (RS485)</p>															
EMC	<p>Low voltage directive 2006/95/EC: EN60950-1:2006 + A12:2011</p> <p>EMC directive 2004/108/EC: EN 61000-6-1:2007 EN 61000-6-2: 2005 EN61000-6-3:2007 + A1:2011 EN 61000-6-4: 2007 + A1:2011</p> <p>RoHS directive 2002/95/EC</p>															
Model Numbers:	<p>14970-V217 - RS485 Version</p> <p>14970-V218 - RS232 Version</p>															

Overall Dimensions



Connection / Indication Details

